

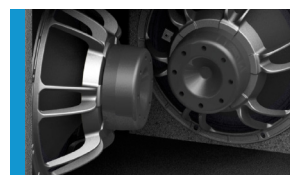


Partial grille option

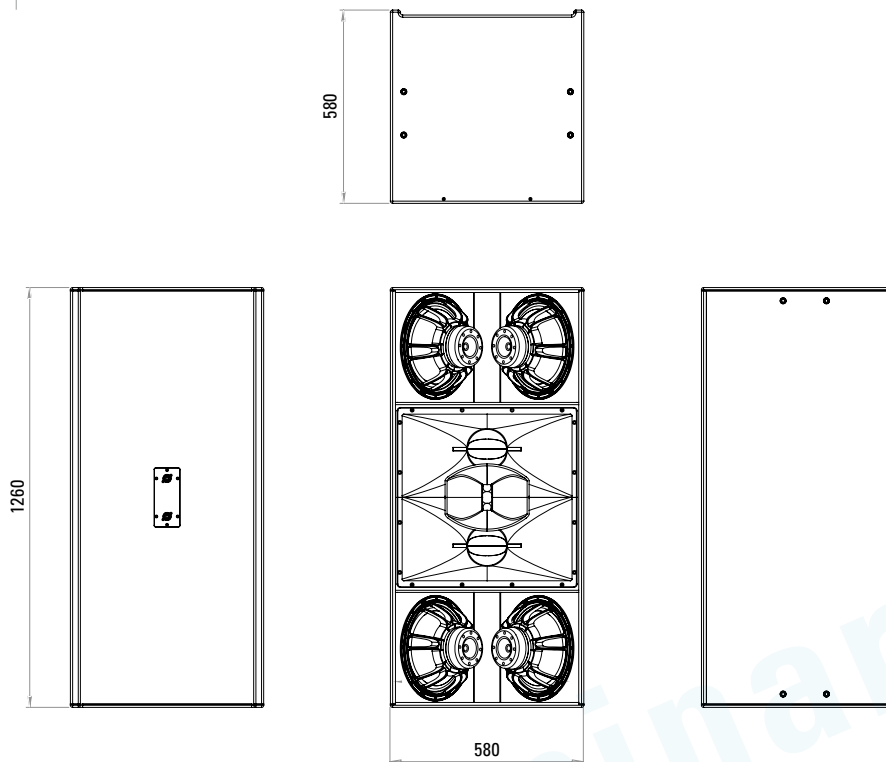
The PS 2F is a high-performance system for clubs, live applications, installations in sports arenas and amusement parks. Its unique twin-coaxial mid-high section provides a very precise and even dispersion pattern of 80° x 40°. All three sources virtually merge into a single one, resulting in an excellent spatial resolution. Four 12-inch woofers extend its frequency range down to 55 Hz. The three-way design offers impressive dynamic headroom with minimal distortions and coloration. Thanks to the integrated crossover network, only two amplifier channels are required. Colors of horn flares, grilles and enclosures can be customized to suit the needs of architects and designers. The rotatable horn flare allows for upright or horizontal installation.

## PRODUCT SPECIFICATIONS

<b>Speaker Components</b>	4 x 12" / 2 x 6,5" / 1,4" (3" VC)
<b>Description</b>	High Impact Point Source
<b>Power</b> AES / Peak	LF: 3000 W / 9000 W MHF: 300 W / 900 W
<b>Impedance</b> nominal	LF: 4 Ω / MHF: 16 Ω
<b>SPL</b> 1 W / Peak @ 1 m	LF: 102,5 dB / 142 dB MHF: 108 dB / 138 dB
<b>Usable Range</b>	55 Hz - 20 kHz (-6 dB)
<b>Tuning Frequency</b> Excursion minimum	65 Hz
<b>X - Overpoint</b> acoustical	300 Hz / 1,3 kHz
<b>Coverage</b> horizontal / vertical	80° x 40° rotatable
<b>Enclosure Wedge Angle</b>	n.a.
<b>Connectors</b>	2 x Neutrik Speakon NL4 in/out Coding: 1 +/- MHF, 2 +/- LF
<b>Handles</b>	n.a.
<b>Rigging / Fittings</b>	16 x M10 threaded inserts 4 x on each side
<b>Weight</b>	81 kg
<b>Size</b> height x width x depth	126,0 x 58,0 x 58,0 cm
<b>Order No.</b>	<b>00784</b>

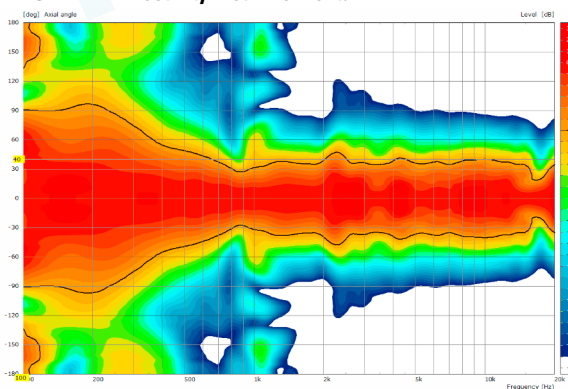


## DIMENSIONS



## MEASUREMENTS

PS 2F - 2D Directivity Plot - horizontal



PS 2F - 2D Directivity Plot - vertical

